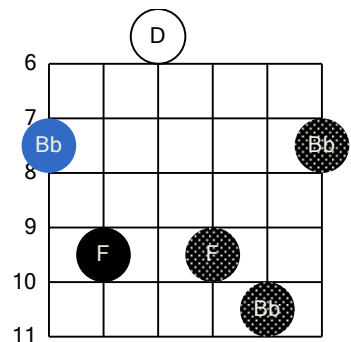
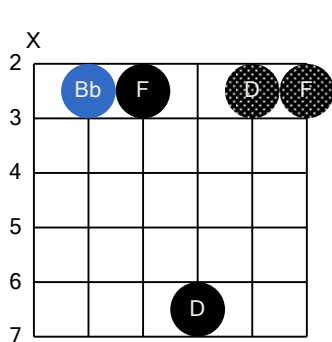
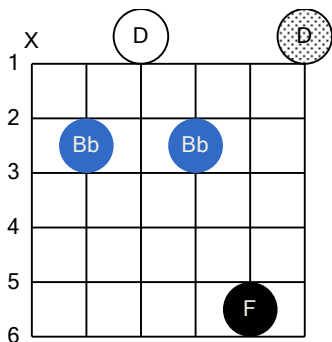
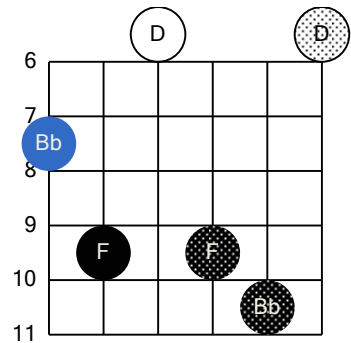
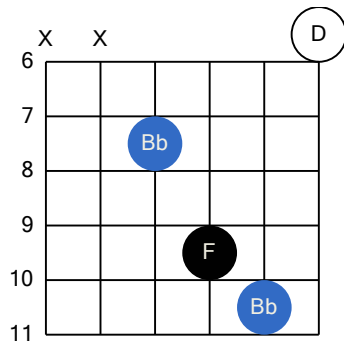
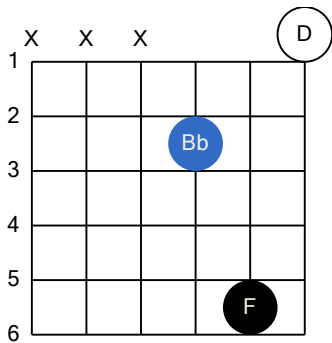
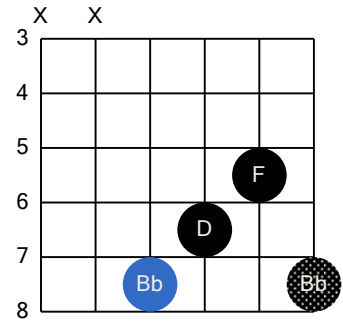
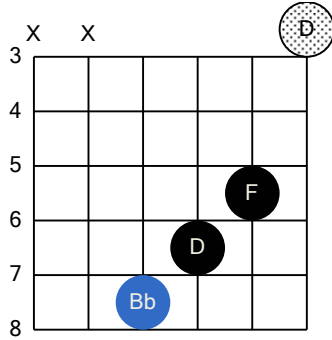
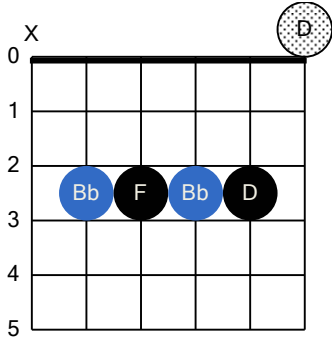
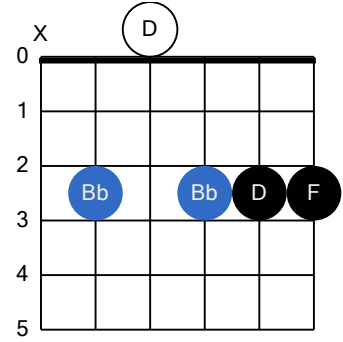
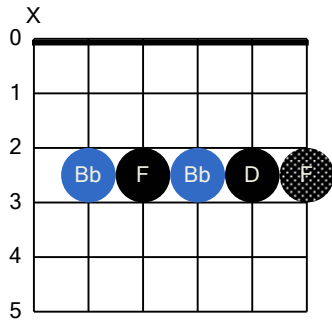
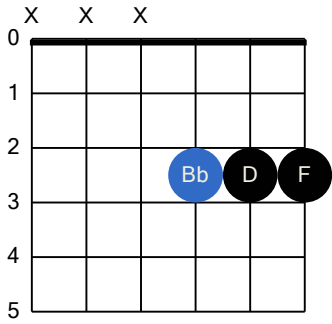


Bb major (Guitar Open G Tuning)



Bb major (Guitar Open G Tuning)

The diagrams are arranged in a 4x3 grid. Each diagram shows a fretboard with strings numbered 1-6 and frets numbered 2-12. Notes are represented by circles: blue for Bb, black for F, and black with a stippled pattern for D. Some diagrams have 'X' marks above strings 1 and 2, and some have a circled 'D' above the 4th string.

- Diagram 1 (top-left): Frets 2, 3, 5, 6. Notes: Bb (2,1), F (2,2), F (5,4), D (6,3).
- Diagram 2 (top-middle): Frets 5, 8, 9. Notes: F (5,4), Bb (8,2), F (9,3). Muted strings 1, 2. D (4,0).
- Diagram 3 (top-right): Frets 7, 10, 11, 12. Notes: Bb (7,2), F (10,3), Bb (11,4), D (12,5). Muted strings 1, 2. D (4,0).
- Diagram 4 (row 2, left): Frets 6, 7, 9, 10, 11. Notes: Bb (7,1), D (6,3), F (9,2), Bb (11,4). D (4,0).
- Diagram 5 (row 2, middle): Frets 5, 6, 7, 8, 9, 10. Notes: Bb (7,1), D (6,3), F (8,4), F (9,2), F (10,3). D (4,0).
- Diagram 6 (row 2, right): Frets 2, 3, 5, 6. Notes: Bb (2,1), F (5,4), D (6,3). Muted strings 1, 2. D (4,0).
- Diagram 7 (row 3, left): Frets 5, 6, 7, 8, 9, 10. Notes: Bb (7,1), D (6,3), F (9,2), F (10,3). D (4,0).
- Diagram 8 (row 3, middle): Frets 7, 8, 9, 10, 11, 12. Notes: Bb (7,1), Bb (8,4), F (9,2), F (10,3), Bb (11,4), D (12,5). D (4,0).
- Diagram 9 (row 3, right): Frets 6, 7, 8, 9, 10, 11. Notes: Bb (7,1), D (6,3), Bb (8,4), F (9,2), F (10,3), Bb (11,4). D (4,0).
- Diagram 10 (row 4, left): Frets 5, 6, 7, 8, 9, 10. Notes: Bb (7,1), D (6,3), F (9,2), F (10,3), Bb (11,4). D (4,0).
- Diagram 11 (row 4, middle): Frets 7, 8, 9, 10, 11, 12. Notes: Bb (7,1), F (9,2), F (10,3), Bb (11,4), D (12,5). D (4,0).
- Diagram 12 (row 4, right): Frets 5, 6, 7, 8, 9, 10. Notes: Bb (7,1), D (6,3), F (9,2), F (10,3), Bb (11,4). D (4,0).

Bb major (Guitar Open G Tuning)

